



GARMENT DESCRIPTION:

FRONT:

- 2 tone Conti jacket, charcoal, lime top section, with silver reflective piping at the bottom.
- Open neck collar; ¼" topstitch all around, 1/16" topstitch along neck line, loop and labels inserted @center back neck seam.
- Metal zipper placket; S/n topstitch w/bar tack. Triple needle topstitch @ shoulder, armhole and side seam.
- Square patch pocket @ left chest; d/n topstitch, with pen slot and V-flap, press stud closure.
- 2 bottom pockets; d/n attached, 1 cm clean finish pocket hem w/bar tack, insert at side seam.
- 1cm clean finish bottom hem.
- Front with triple stitch @ armhole

BACK:

- Back with triple stitch @ armhole, shoulder. Back with lime upper panel and silver reflective piping at the bottom.

SLEEVE:

- Plain Long sleeve with lime contrast from armhole to half way down the sleeve and silver reflective piping between the two shades.





► GARMENT DESCRIPTION:

FRONT:

- 2tone Conti trouser, Charcoal with lime contrast on middle section of front legs and silver reflective piping on both ends of contrast.
- 4 cm self-cut out waist band; s/n topstitch along seam, consists of 5 belt loops (1 x 7 cm @ front and 1 x 8 cm @ back), ordinary button hole and metal shank button closure.
- Ykk metal brass zipper opening; s/n topstitch form fly, w/bar tacks, d/n topstitch @ lower front rise.
- Functional slant pocket; d/n topstitch w/bar tack, self-pocket bag.
- Triple stitch @ inseam and side seam.
- 1.2 cm clean finish bottom hem.

BACK:

- Charcoal with lime contrast on back and silver reflective piping on both ends of contrast.
- 4 rows multi elastic waistband.
- Triple stitch @ back rise, inseam and out seam.
- Square patch pocket @ right panel; d/n attached and size label inserted, 1 cm clean finish pocket hem w/bar tack.





GARMENT DESCRIPTION:

FRONT:

- 2 tone Conti jacket, white lime top section.
- Open neck collar; ¼" topstitch all around, 1/16" topstitch along neck line, loop and labels inserted @ center back neck seam.
- Metal zipper placket; S/n topstitch w/bar tack. Triple needle topstitch @ shoulder, armhole and side seam.
- Square patch pocket @ left chest; d/n topstitch, with pen slot and V-flap, press stud closure.
- 2 bottom pockets; d/n attached, 1 cm clean finish pocket he w/bar tack, insert at side seam.
- 1 cm clean finish bottom hem.
- Front with triple stitch @ armhole

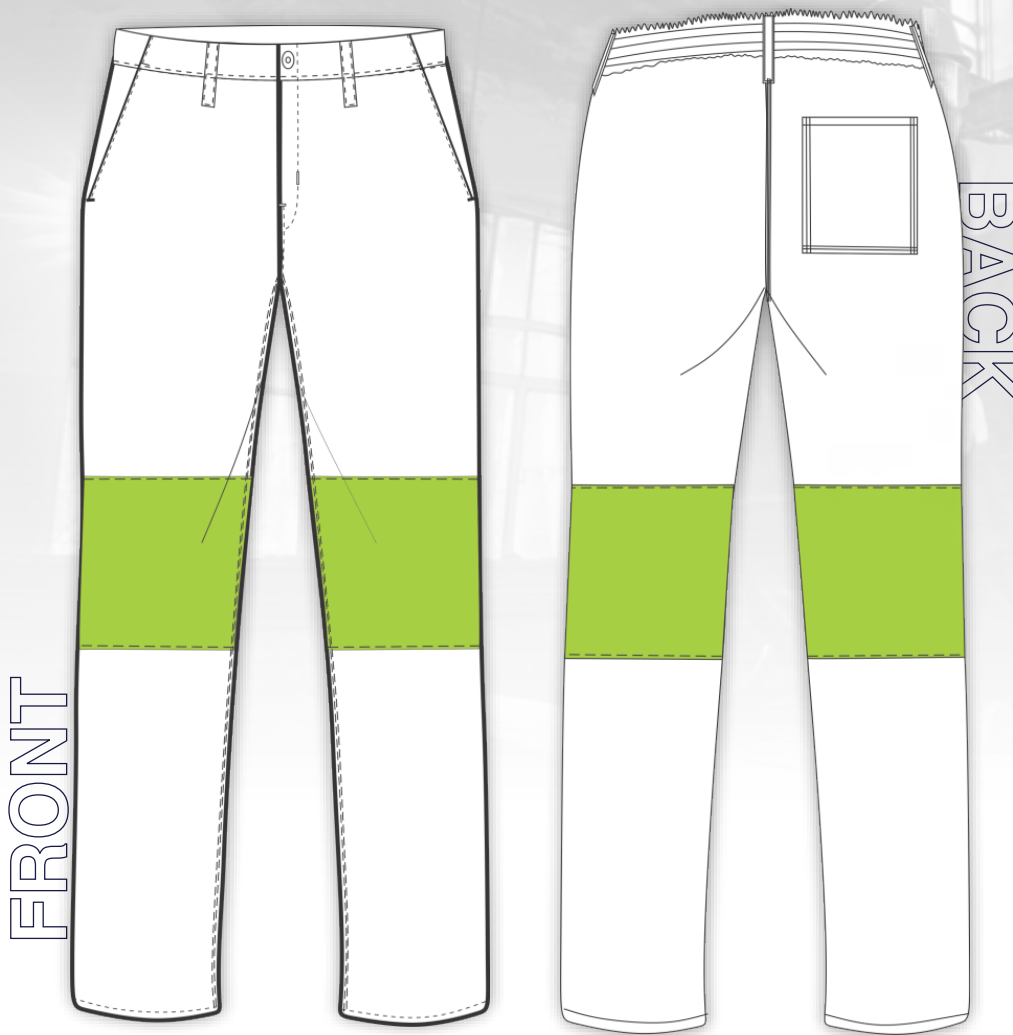
BACK:

- Back with triple stitch @ armhole, shoulder. Back with lime upper panel.

SLEEVE:

- Plain Long sleeve with lime contrast from armhole to half way down the sleeve.





► GARMENT DESCRIPTION:

FRONT:

- 2tone Conti trouser, white with lime contrast on middle section of front legs.
- 4 cm self-cut out waist band; s/n topstitch along seam, consists of 5 belt loops (1 x 7 cm @ front and 1 x 8 cm @ back), ordinary button hole and metal shank button closure.
- YKK metal brass zipper opening; s/n topstitch form fly, w/bar tacks, d/n topstitch @ lower front rise.
- Functional slant pocket; d/n topstitch w/bar tack, self-pocket bag.
- Triple stitch @ inseam and side seam.
- 1.2 cm clean finish bottom hem.

BACK:

- White with lime contrast on
- 4 rows multi elastic waistband.
- Triple stitch @ back rise, inseam and out seam.
- Square patch pocket @ right panel; d/n attached and size label inserted, 1 cm clean finish pocket hem w/bar tack.

