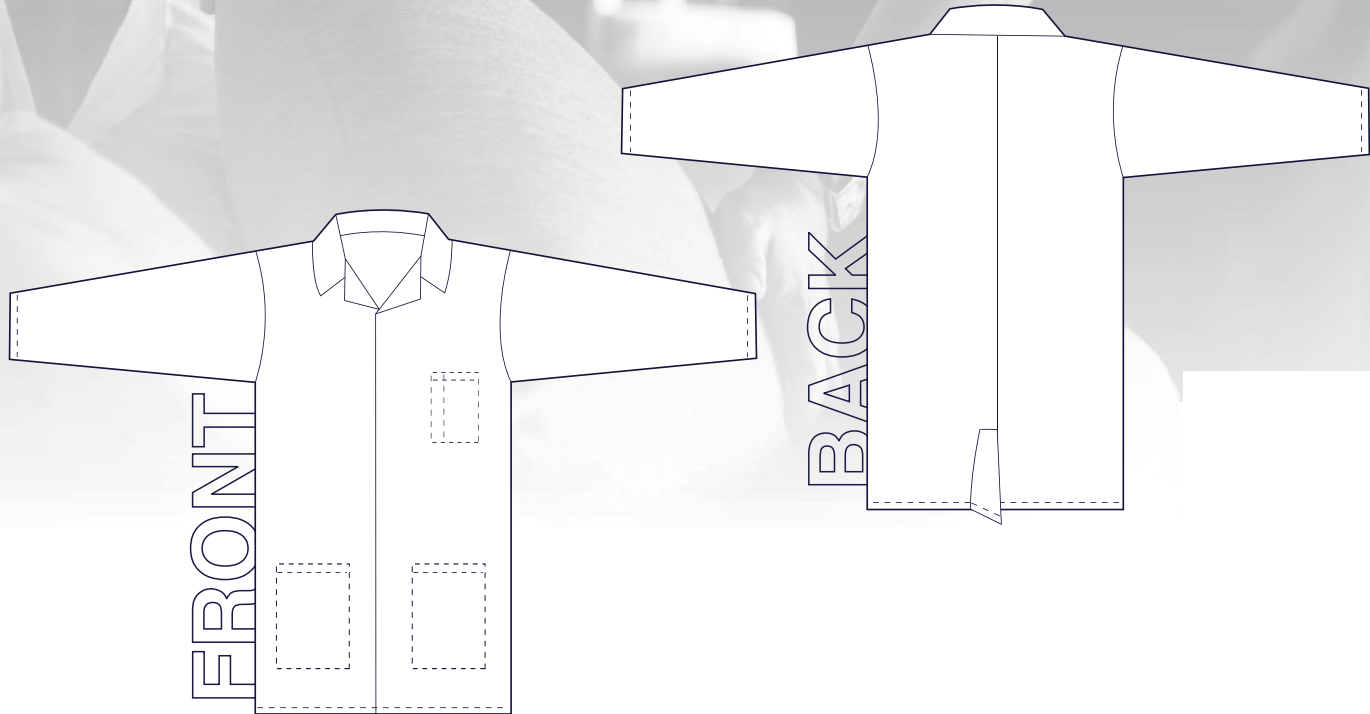




**Bidvest**  
Laundry Group

# STANDARD DUST COAT



## ▶ GARMENT DESCRIPTION:

### FRONT:

- Open neck collar; no topstitch, ¼" topstitch along neck line, labels inserted @ center back neck seam.
- Concealed press studs secured with multiple bar tacks.
- Outside square chest pocket @ left chest; s/n attached, pen pocket slot stitched, 6 mm clean finish pocket hem w/bar tack.
- Outside 2 square bottom pockets; s/n attached, 6 mm clean finish pocket hem w/bar tack.
- 1.2 cm clean finish bottom hem.

### BACK:

- Plain back with center back seam; center back slit with multiple bar tacks.

### SLEEVE:

- Plain long sleeve; 6 mm clean finish sleeve hem with bar tack @ stress point.

