

▶ GARMENT DESCRIPTION:

FRONT:

- Open neck collar; no topstitch, ¼" topstitch along neck line with labels inserted @ center back neck seam.
- Self cut out front yoke.
- Concealed press studs placket with multiple bar tacks.
- Square pocket @ left chest inside; s/n attached.
- Monza flap inserted @ yoke seam, secured bar tack.
- 1.2 cm clean finish bottom hem.

BACK:

- Plain back.

SLEEVE:

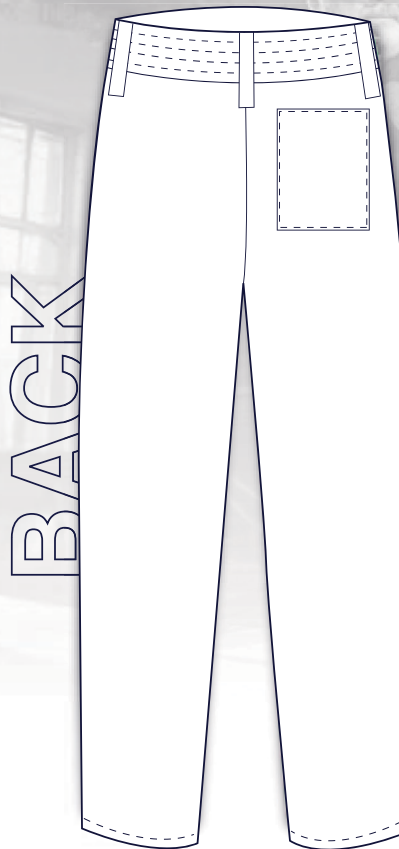
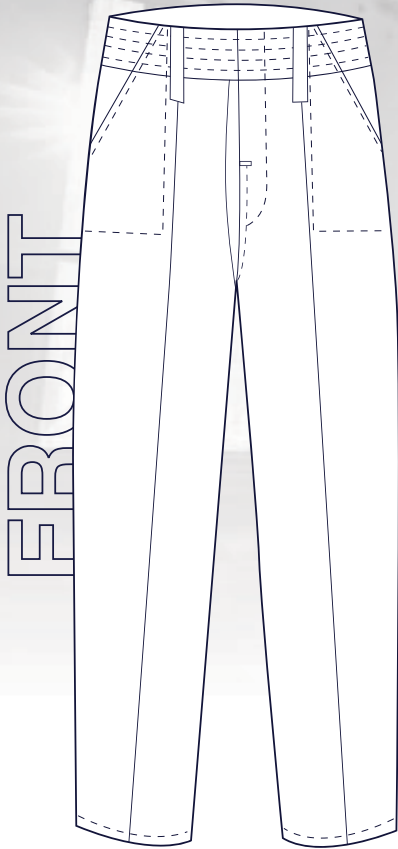
- Plain long sleeve with 2 cm half elastic cuff.





Bidvest
Laundry Group

HACCP CONTI SUIT PANTS



▶ GARMENT DESCRIPTION:

FRONT:

- 4 rows multi needle flat front waist band; consists of total 5 belt loops, ordinary button hole and metal shank button closure.
- Inside webbed waistband and not self fabric for covering band.
- Metal zipper opening; s/n j-form topstitch, d/n topstitch @ lower front rise with multiple bar tacks.
- Center front pin tucks.
- Inside patch pocket; s/n attached, 1/4" topstitch slant with self bearer and pocketing, secured bar tack.
- 1.2 cm clean finish bottom hem.

BACK:

- Plain back.
- Square patch pocket @ right panel; s/n attached.
- Monza flap with size label inserted @ seam, secured with bar tack.

